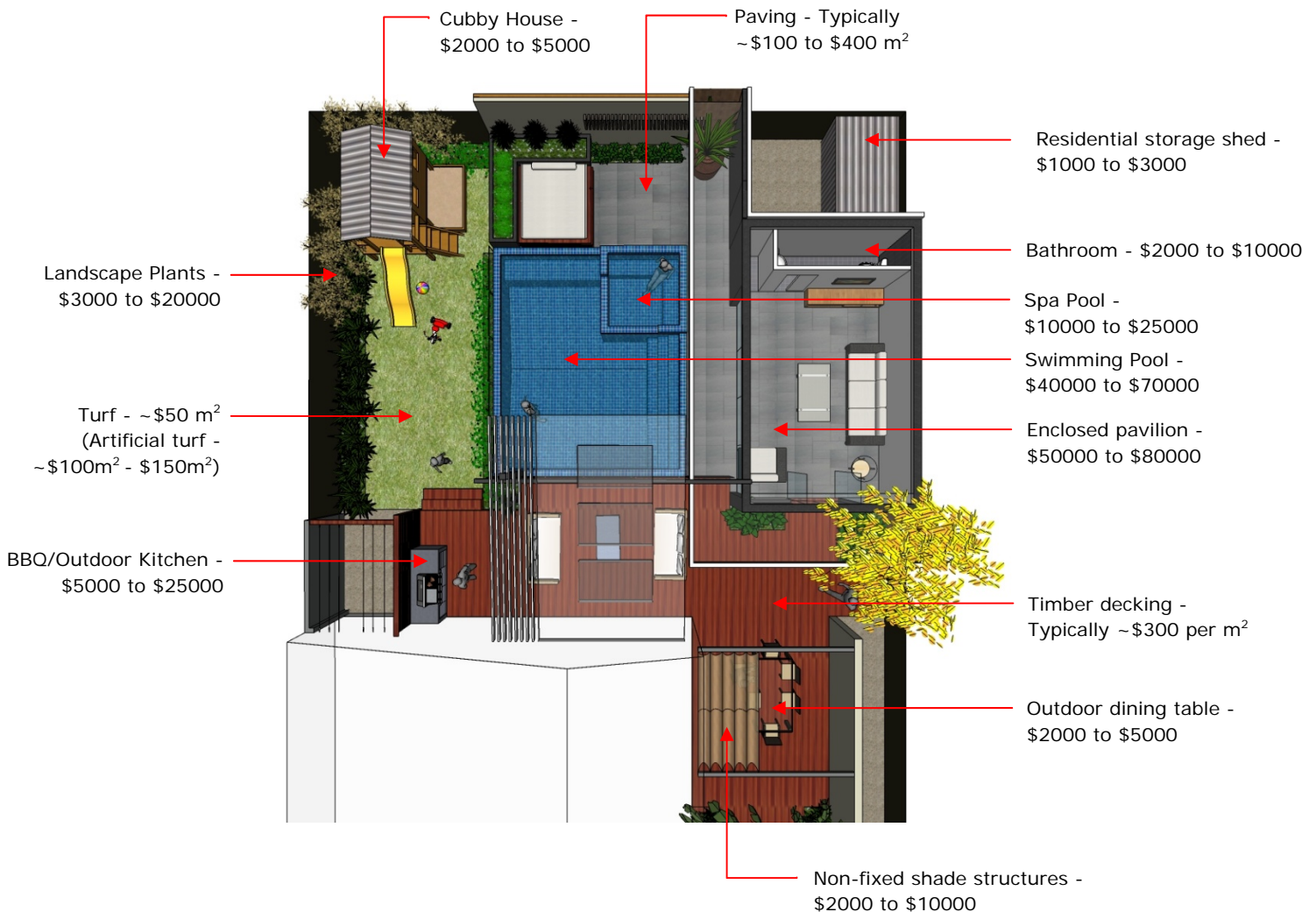


# What does it cost?

At Spaces and Places we are constantly being asked by our clients "What will my project cost?". This question is both fair and reasonable to ask, and is a subject which we are happy to discuss in an open and transparent manner to ensure that there is no confusion as to the final outcome.

There is no simple answer to the question of course and the cost of any given project will vary greatly on the types of material used and the level of complexity in construction.

The following illustration gives a 'ballpark indication' of the cost of various components of any given design and is intended as a guide only. Please discuss your specific design questions with your Spaces and Places representative.



Other costs include:

- Documentation and permits - \$5000+
- Excavation works and Tipping - \$7500+
- Glass pool fencing - ~\$500 l/m
- Solar Heating - \$5000+
- Spa pool - \$1000 to \$25000

There are many other elements that can be included in any given design including (but not restricted to) sculptures, water features, feature walls, multimedia elements, etc which will all incur additional costs.

Again, we are happy to discuss these options with you to help you achieve your desired outcome.