

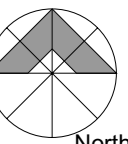
**Spacesandplaces**  
Landscapes and pools

11 Millicent St, Burwood  
Victoria 3125  
p. 03 98085186 m. 0416 066 010  
e. j.craig@spacesandplaces.com.au  
w. spacesandplaces.com.au  
abn. 55 562 101 581

Copyright © 2005. These drawings are copyright to Spaces & Places. No copies may be taken, in whole or part, under the copyright act, unless written permission is obtained from Spaces & Places. Permission can be obtained by contacting the office of Spaces & Places - refer to details.

Project Details  
**ARTISTIC IMPRESSION**  
**PAGE 1**

DATE 28 MAY 08  
SCALE 1:100



BANGALOW PALMS TO FEATURE IN LONG GARDEN BED STRIP.

TIMBER SCREENING TO WRAP AROUND CORNER BEHIND THE GARDEN BED TO GATE. GATE TO MAKE UP FOR POOL REGULATIONS.

TALL TIMBER BATTERN SCREEN FIXED TO METAL POSTS THAT PROVIDE THE SUPPORT FOR THE CANOPY. POSTS TO BE CLAD WITH BLACK COLOURBOND TIN. LIGHTING IN THE CEILING OF CANOPY TO BE DIRECTED ONTO TIMBERS

BUILT IN BBQ TO BE SURROUNDED WITH POLISHED STONE BENCH. POSSIBLE UNDER BENCH STORAGE WITH CUPBOARD DOORS.

STONE INLAY



PATH TO FRONT OF HOUSE

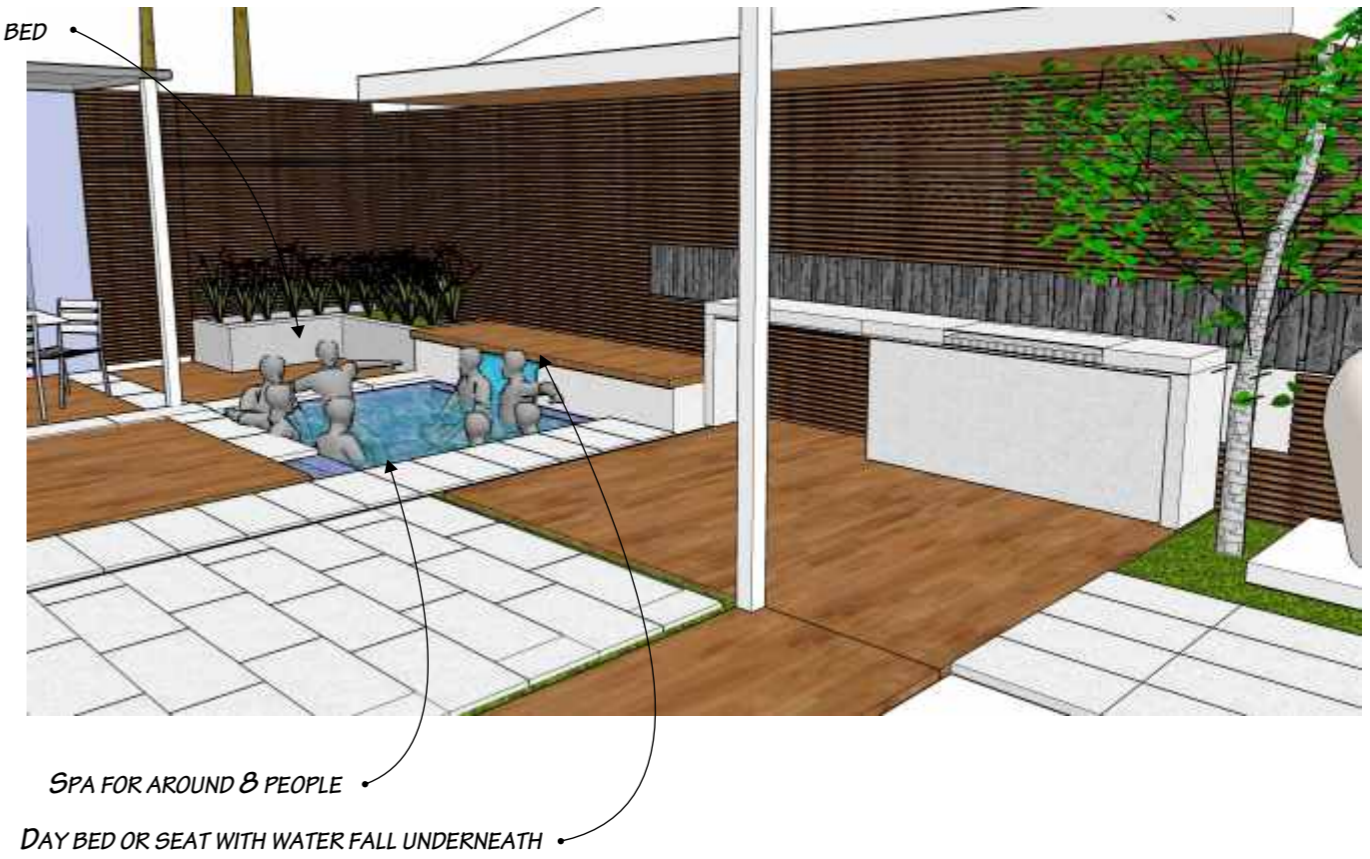
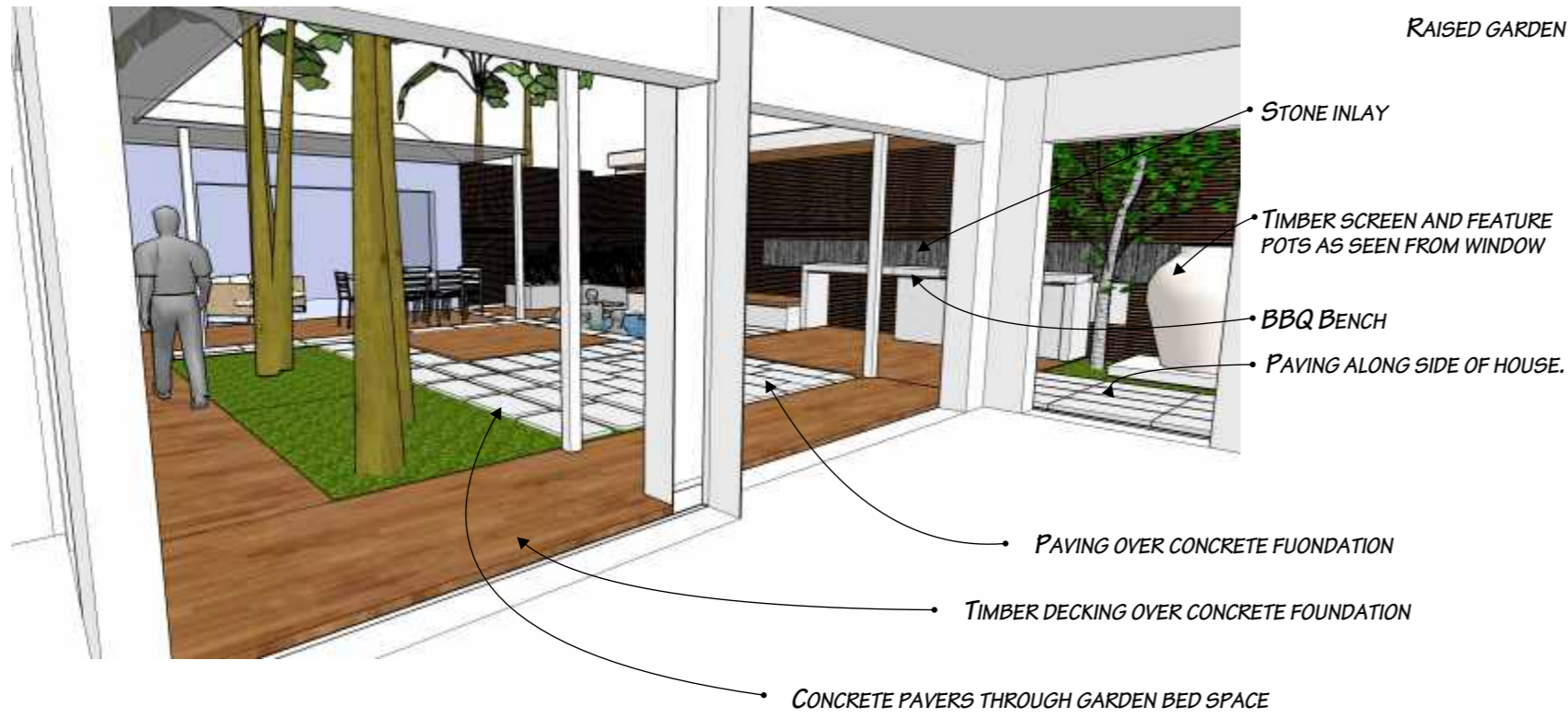
TIMBER SCREEN TO REACH AS FAR AS GATE

FEATURE POTS INFRONT OF TIMBER SCREEN.

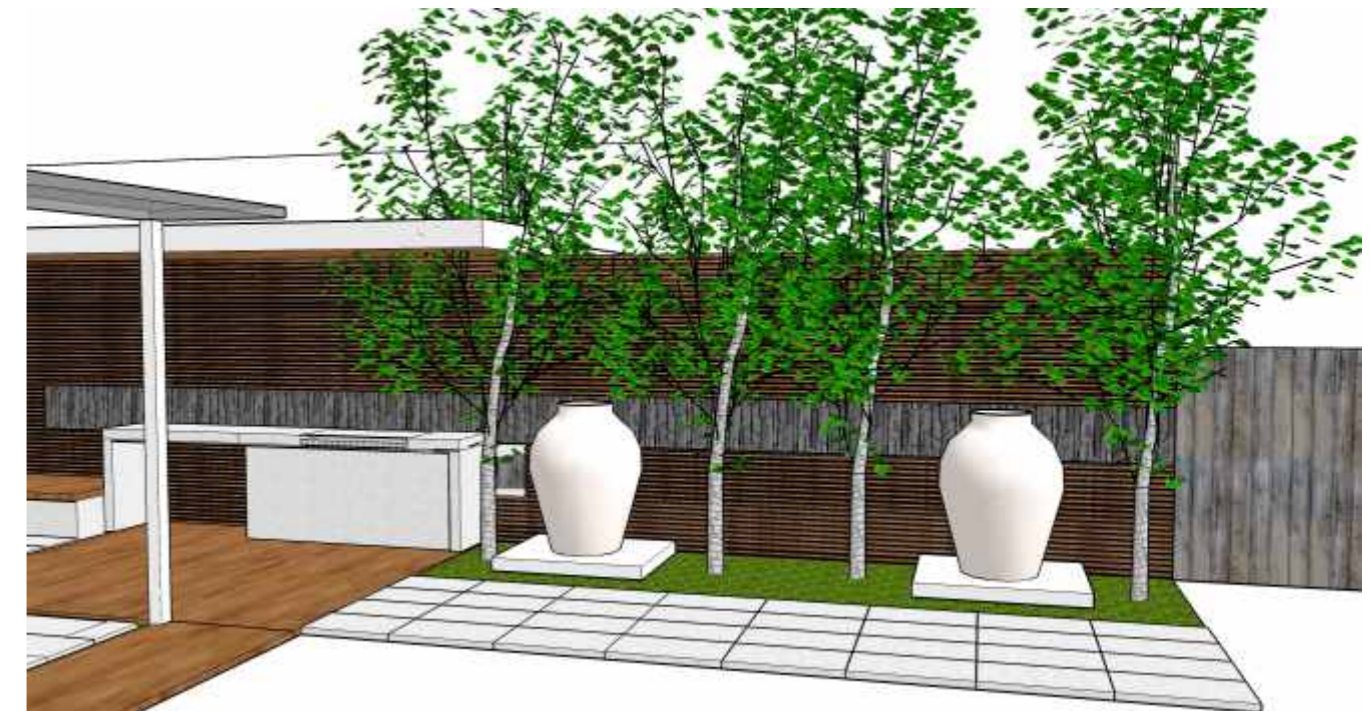
PAVING TO WRAP THROUGH THE DECKING.

CONCRETE PAVERS TO WRAP AROUND SPA AREA AND TO MAKE UP PAVED AREAS.

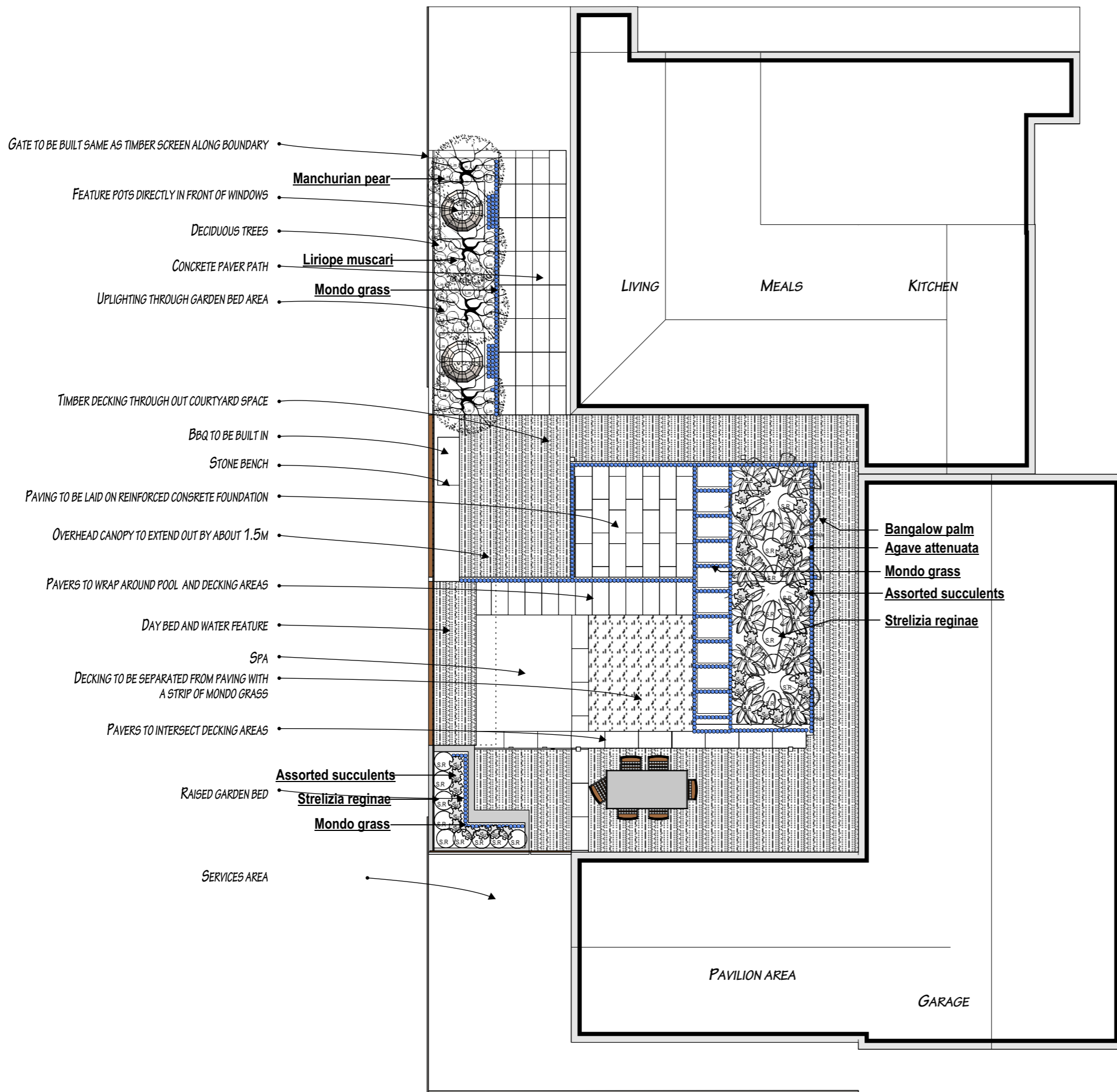
TIMBER BOARDWALK TO WRAP AROUND GARDEN BED AREAS.



VIEW BACK TOWARDS HOUSE



FEATURE POTS OUTSIDE WINDOWS



**Notes**

**Timber decking :** 140 x 19 merbau boards over treated pine sub-frame to be attached to concrete foundation with provision for drainage. Contractor to provide most suitable method of fixing. To be oiled with suitable oil.








**Paving :** Concrete pavers to be laid on mortar bed over reinforced concrete foundation - typically with an (f62 steel). To be grouted with mortar mix to match colour of pavers. Sealing is optional but recommended.

**Garden bed Preparation :** All garden bed areas are to be prepared with an admix of organic compost and water holding agents. To be finished with 50mm of organic mulch/compost.

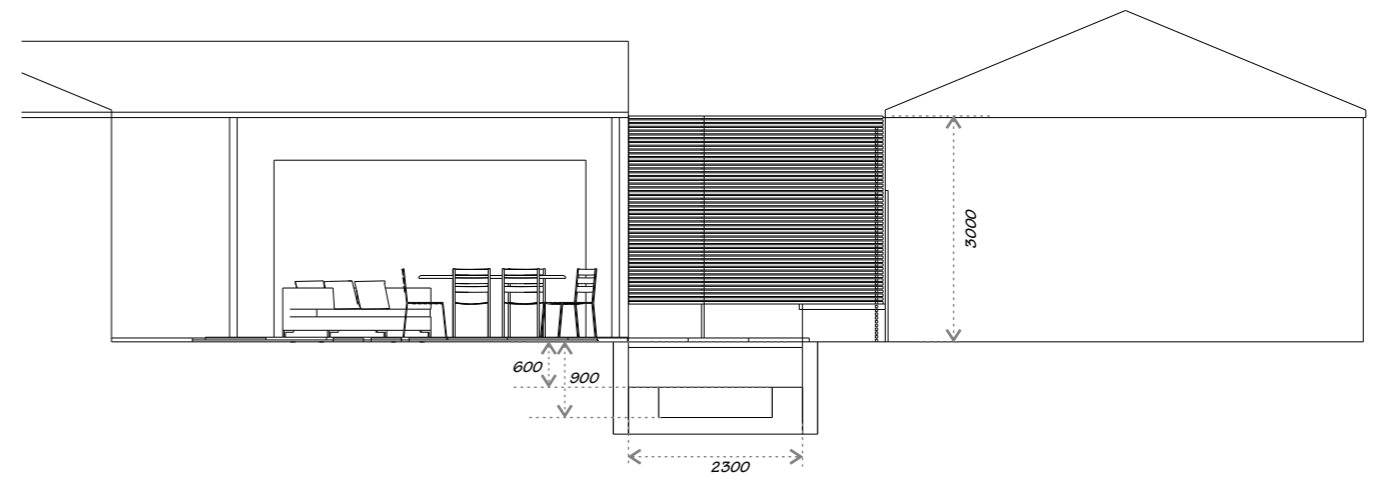
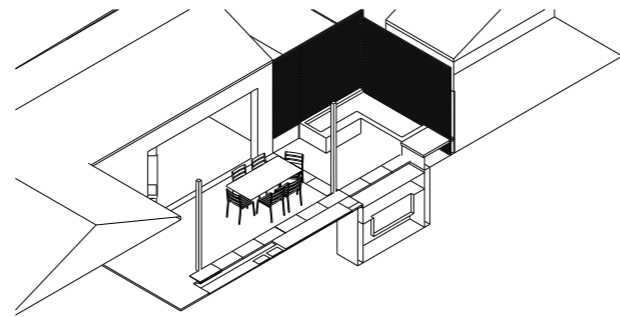
All garden bed areas are to be drip irrigated. To be fed from water tanks and pump. Pool also to be topped up from tanks.

**Spa - :** to be built in accordance with engineering.

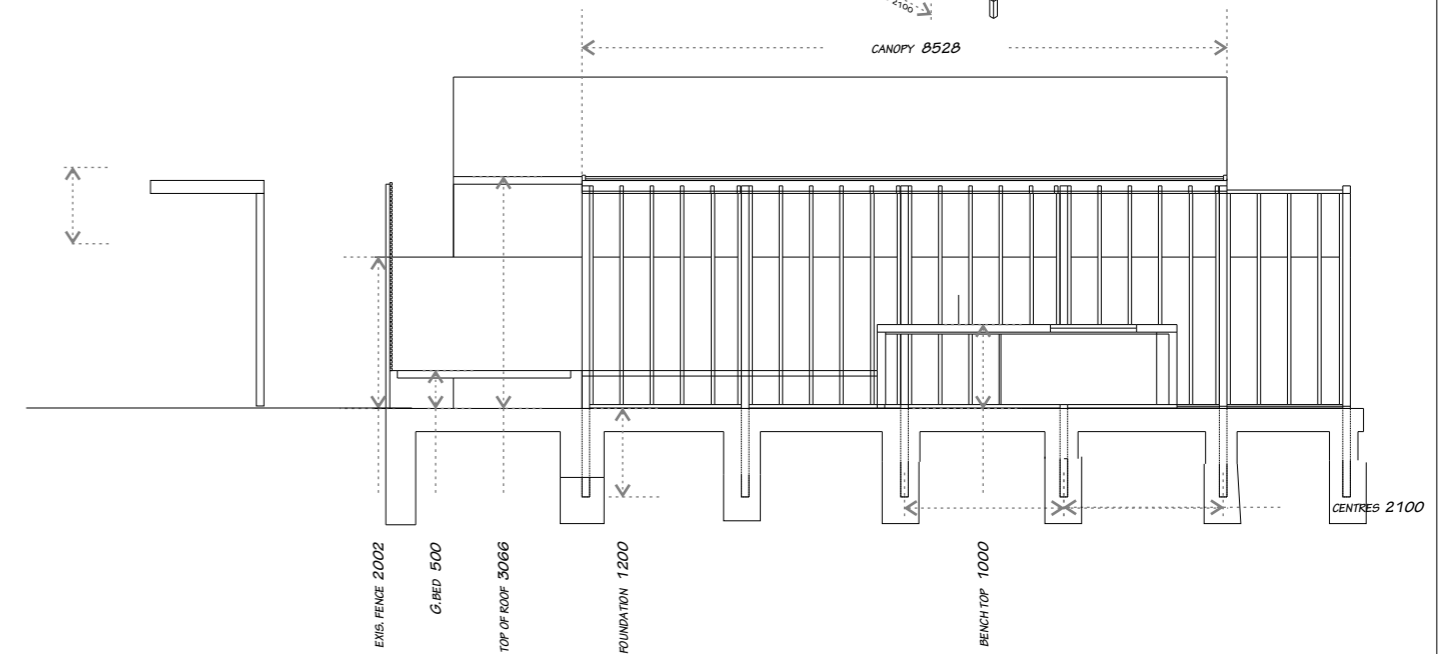
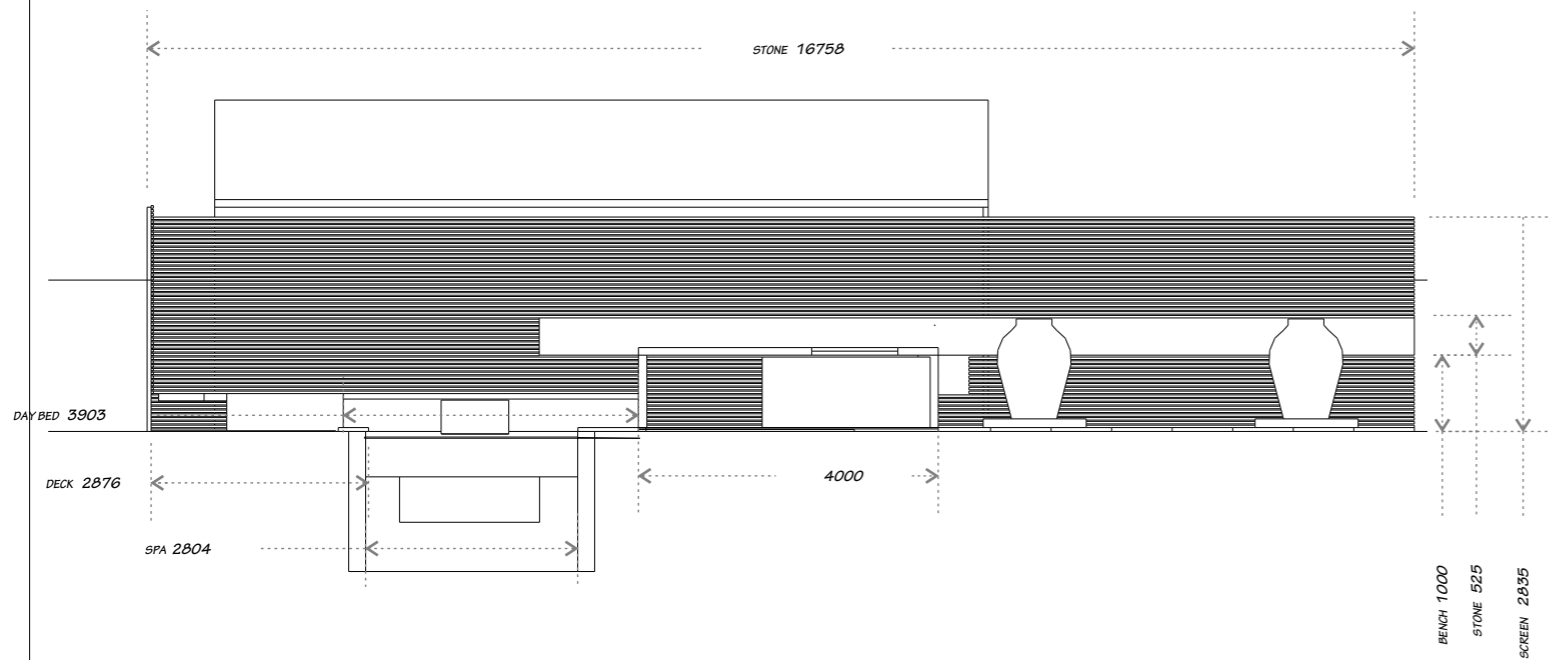
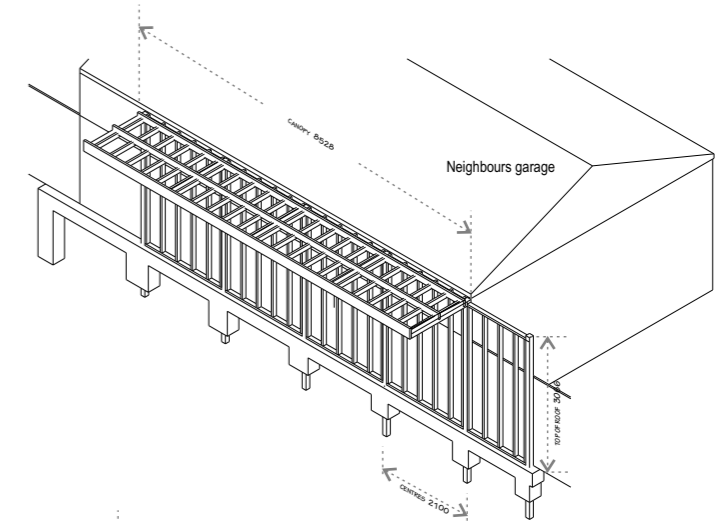
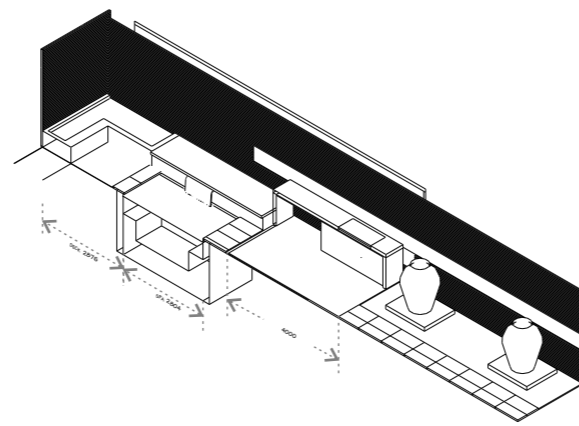
**PLANTING SCHEDULE**

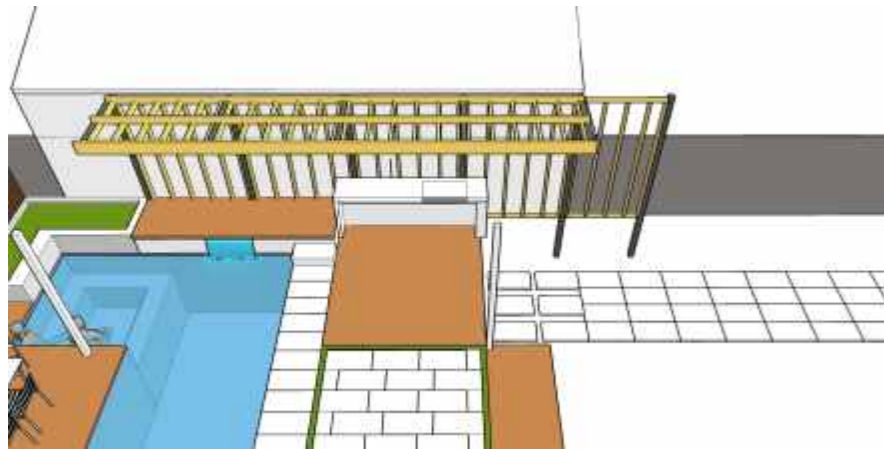
	<b>Plant</b>	<b>Size</b>	<b>Count</b>
	Agave attenuata	25cm	12
	Bangalow palm	Min 35lt	3
	Liriope muscari	14cm	60
	Mondo grass	14cm	620
	Manchurian pear	Min 35 lt	4
	Strelizia reginae	20cm	25
	Assorted succulents	14cm	27





OVER VIEW OF FRAMING COMPONENTS FOR CANOPY.

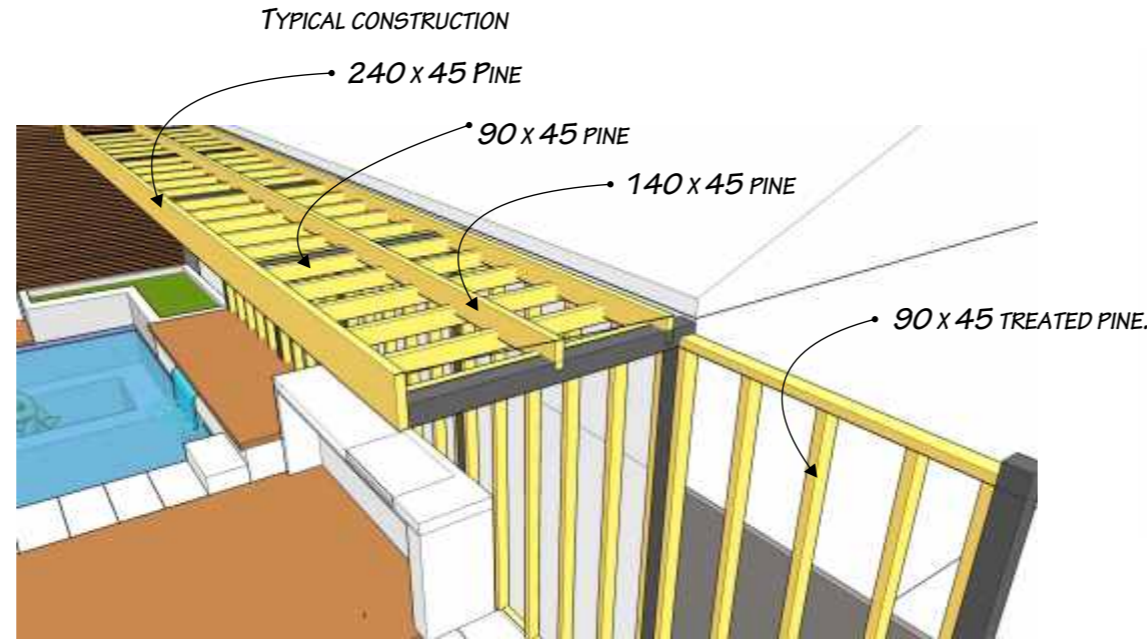




OVER VIEW OF FRAMING COMPONENTS FOR CANOPY.



ROOF LINE EXTENDS APROX 1.5M OUT



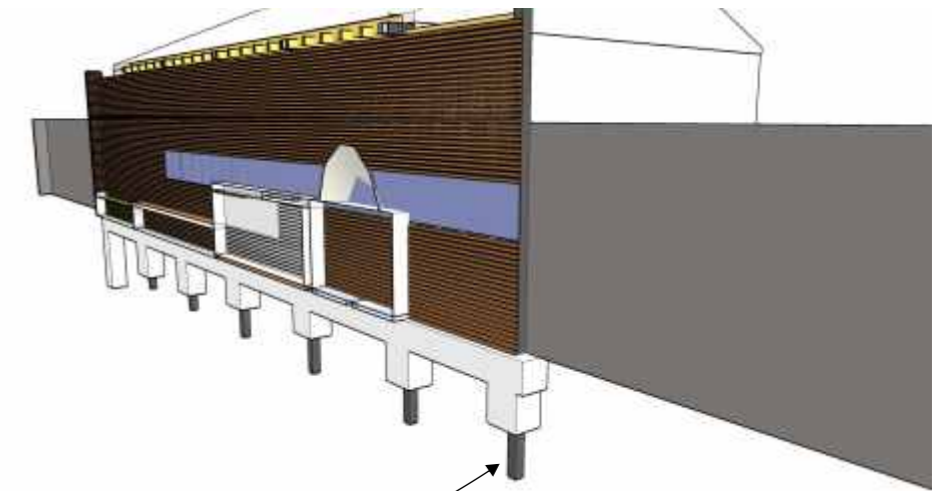
TYPICAL CONSTRUCTION

240 x 45 PINE

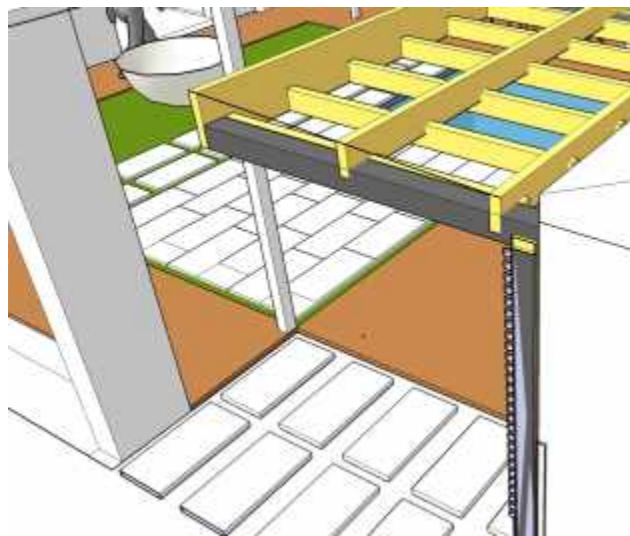
90 x 45 PINE

140 x 45 PINE

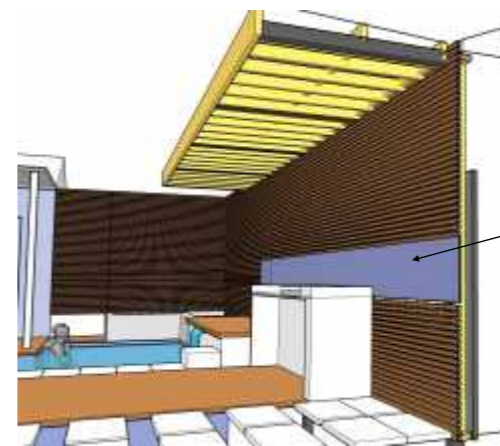
90 x 45 TREATED PINE.



POSTS 1200MM DEEP WITH STRIP COMBINATION OF FOOTING TO BE POURED AS ONE PIECE. (CONCRETE NOT SHOWN TO REVEAL POSTS) - POSTS TO SIT ON CONCRETE BLOCK AT BASE OF HOLES.

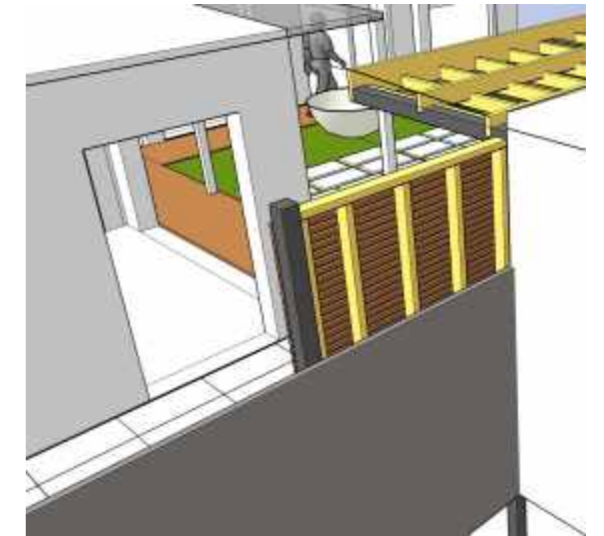


STEEL BEAMS TO BE WELDED ON - EITHER IN SITU OR PRE FABRICATED



Cement sheeting for stone works

TO BE CLAD WITH HORIZONTAL TIMBERS OVER A BLACK TIN TO HIDE ALL THE FRAME WORK



REAR OF SCREEN EXTENDS UP TO THE GATE, AND THE FRAME WORK WILL BE VISIBLE FROM THE NEIGHBOURS SIDE - SOME ATTENTION MAY BE REQUIRED.